

Airscanner Mobile SafeMode 0.1a for Pocket PC

Warning: This is alpha-level test software. For experienced users only. Please submit your comments to us at <http://airscanner.com/contact.php>.

Introducing Airscanner Mobile SafeMode

ASMSafeMode is a crash protection system for Pocket PC devices. Its purpose and behavior are very similar to the popular safe mode for Windows PC's.

With ASMSafeMode installed you can avoid some annoying situations like when your PDA freezes or enters in a soft-reset loop.

ASMSafeMode disables 3rd party programs normally loaded during boot phase. So your device can boot as clean as after a hard reset, allowing you to uninstall any buggy application and solve the problem without losing all your data.

In a nutshell

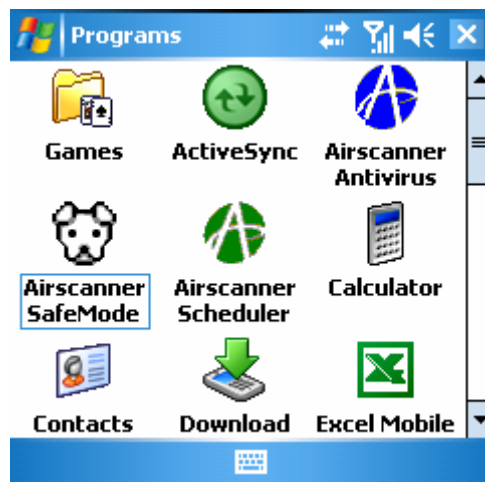
After installation, ASMSafeMode is ready to protect your PDA.

By default, the device automatically enters in safe mode if two consecutive soft-resets occur in an interval less than 120 seconds.

ASMSafeMode starts very early in the startup process: this way it can control what is safe to run. While entering, ASMSafeMode will disable 3rd party application types, such as:

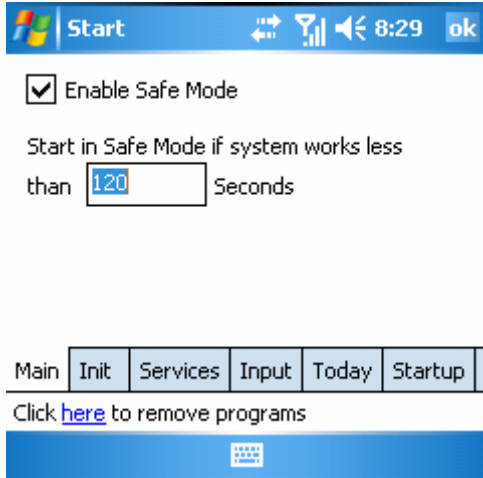
- INIT applications ;
- Services;
- Startup applications;
- Today plugins;
- Input methods;
- ...

Configuring ASMSafeMode



Airscanner SafeMode creates a shortcut icon in "Programs". You can change default ASMSafeMode settings and manage startup applications anytime by choosing this option.

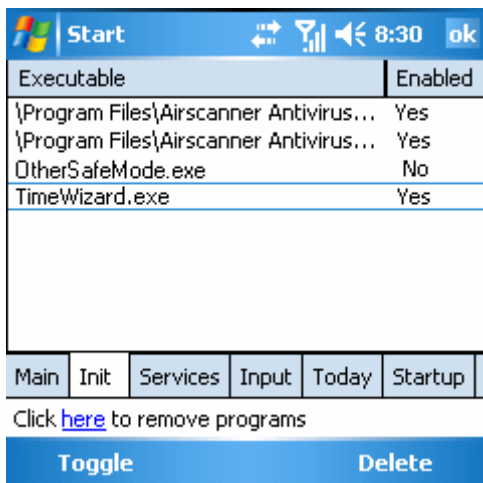
As showed bellow...



On the **Main** page, you can enable/disable ASMSafeMode or change the soft-reset interval. ASMSafeMode detects when your PDA worked for less than X seconds (default is 120 seconds) – If it happens the system enters in safe mode

On the lower part of the ASMSafeMode window, you will see a link which you can tap for quick access to "**Remove Programs**" utility.

After configuring ASMSafeMode, press "OK" to save the settings.



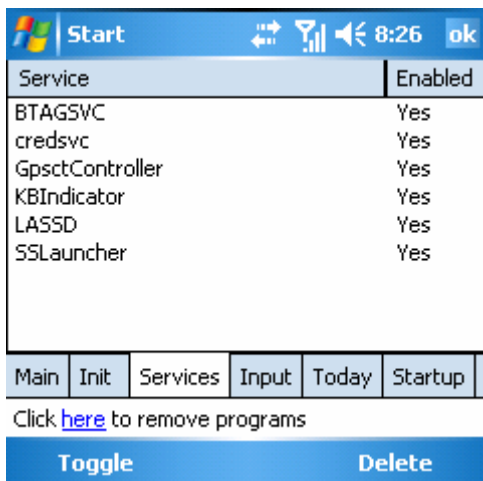
The **Init** page shows only 3rd party programs registered to initialize during boot phase.

Disabling an application avoids it from automatically starting in the normal boot process. To Enable/disable a program, just select it on the list and press **Toggle**.

You can choose to **delete** an application from the init list to permanently prevent it from starting when the OS starts.

However, this option just deletes the registry init entry for the selected item – it will not delete the program.

TIP: Here and in all subsequent cases, you can use Delete option to remove any shortcut/registry entry that some uninstaller left behind.

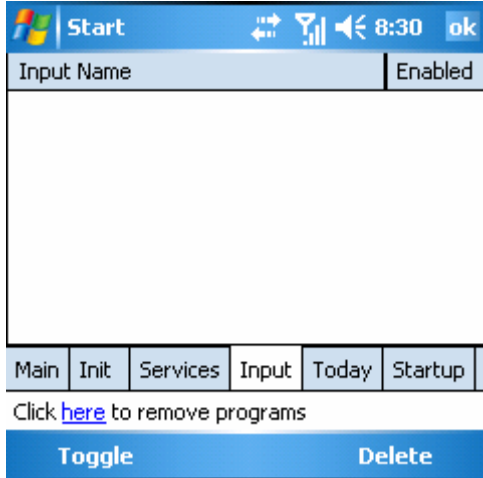


The **Services** page shows a list of all currently installed system Services.

Services are system applications that generally run in background, so you can't see them using task manager.

Toggle will enable/disable the selected service.
 Disabled services will not load any longer during startup.
 You should have extra-care with this option.

Delete will just exclude the current registry entry for the selected item (not the service itself).

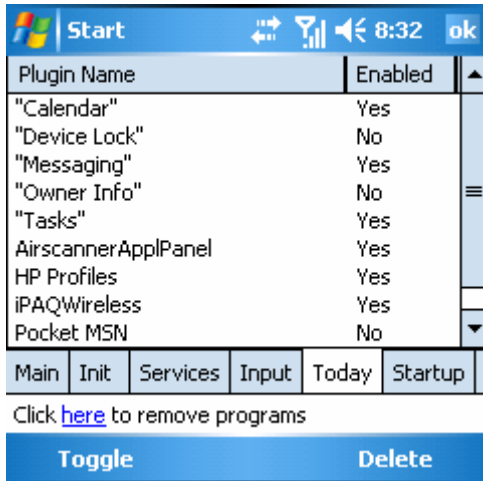


The **Input** page shows all 3rd party Input methods (custom keyboards, etc) currently installed in your PDA.

This list may be empty if there are no 3rd party Input methods installed.

Toggle will enable/disable the Input method.
 If you disable an Input method it will not load during normal startup, and consequently, it will not be accessible for use.

Delete will just delete the current registry entry for the selected item (not the input method itself).

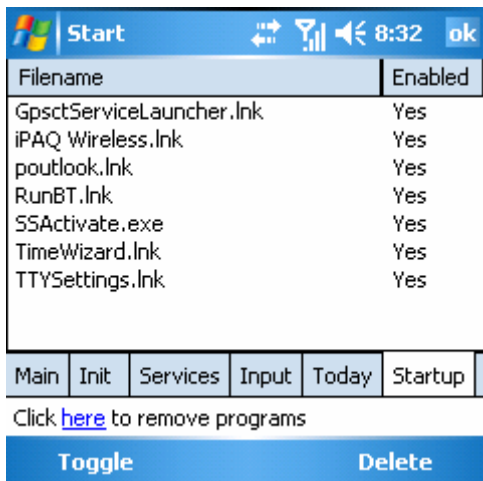


All installed today plug-ins are listed on **Today** page, no matter whether or not they are visible on the PDA Today screen.

Toggle will enable/disable the Today plug-in.
 Disabling avoids the plug-in from starting automatically and from being shown on Today Screen after a normal soft-reset.

Delete will just delete the current registry entry for the selected item (not the plug-in itself).

Remark: ASMSafeMode disables all Today plug-ins, when running in safe mode: you'll see just its interface.



All startup links, placed in "Windows\Startup", are listed on **Startup** page.

The applications pointed by those links start automatically when the Windows starts.

With **Toggle** option, you can disable a link, avoiding the application from starting during boot process.

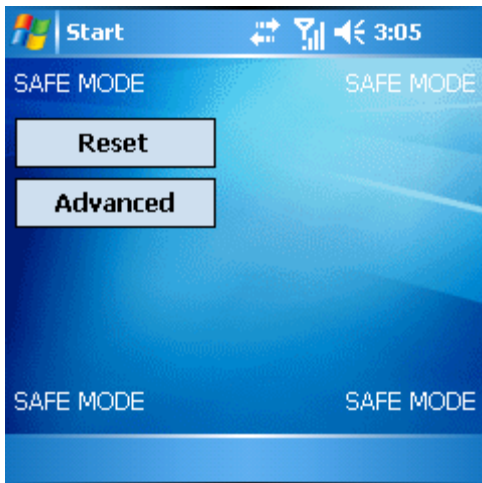
Delete option actually deletes the currently selected link from "Windows\Startup", but not the application it points to.

Loading ASMSafeMode



ASMSafeMode loads automatically on each reset. But it only enters in safe mode when the system works less than X (parameter) seconds (this will probably happen when the device is in a soft-reset loop, or when it just freezes). In this case, you'll hear a bip and the device will soft-reset again: this time in safe mode. The ASMSafeMode startup screen will appear, instead of the default "Today" screen.

On the ASMSafeMode startup screen, you will see **Advanced** and **Reset** buttons.



Press **Advanced** button to load ASMSafeMode options: You'll see 3rd party applications registered in registry **Init** entry, current system **Services**, 3rd party **Input** methods, all installed **Today** plug-ins and the **Startup** programs list. As you are running in safe mode, they were not loaded, so you could safely disable or remove any programs that are causing problems (read **Configuring ASMSafeMode** for more details).

After disabling or uninstalling buggy applications, you can reset in **normal mode** by pressing **Reset** button or in the traditional way (using the stylus pen).

Uninstalling ASMSafeMode

To uninstall ASMSafeMode go to Start Menu/Settings/System/Remove Programs, select Airscanner SafeMode and press **Remove**.

You can't uninstall ASMSafeMode while running it.